



## Wireless sensor

## Wireless water probe

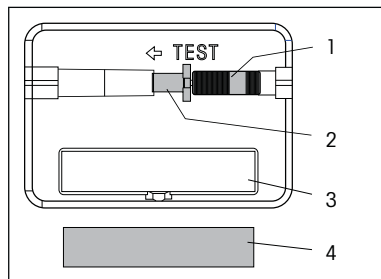
## FWS81

Wireless water probe with swelling discs and energy generator 88x50x30mm, white. No standby loss.

Swelling discs expand strongly in water until the energy generator is triggered and a wireless telegram is sent. The first 5 swelling processes last less than 6 minutes. With further swelling processes up to 10, this time may last for up to 1 hour. After that the swelling discs must be replaced.

Place the water sensors and the swelling discs as close to the water leak as possible. Fix them to a smooth surface with the enclosed cellular rubber strips.

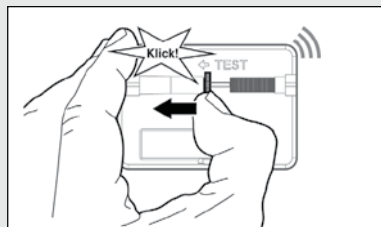
### Underside of the FWS81



1. Swelling disc
2. Piston slide valve
3. Adhesive strip for cellular rubber strip
4. Cellular rubber strip

### Teaching-in

Press the piston slide valve once to teach in the device in an FSR14 or FMZ61 actuator which is switched ready to learn.



### Functional test

- The FWS81 has already been taught-in into the actuator.
- The FWS81 is located at the intended location.
- Press the piston valve on the FWS81 once and release it, the FWS81 sends two signals to the actuator: one signal when pressing the piston valve, one signal when releasing.
- Check whether the actuator has received the signals.

### Technical data

operate delay	< 6 minutes (for the first 5 swelling processes) up to 1 hour (for 6 to 10 swelling processes)
maximum use	10 swelling processes

**ELTAKO GmbH hereby declares that the products that relates to this operating manual, are in compliance with the essential requirements and other relevant provisions of directive 1999/5/EC. A copy of the EU declaration of conformity can be requested at the address below.**

**Must be kept for later use!**

### Eltako GmbH

D-70736 Fellbach

+49 711 94350000

www.eltako.com